



# GMT MONTHLY MEMBERSHIP PROGRESS REPORT

Results as of: 5/31/2020

## GMT Constitutional Area 6, Group G

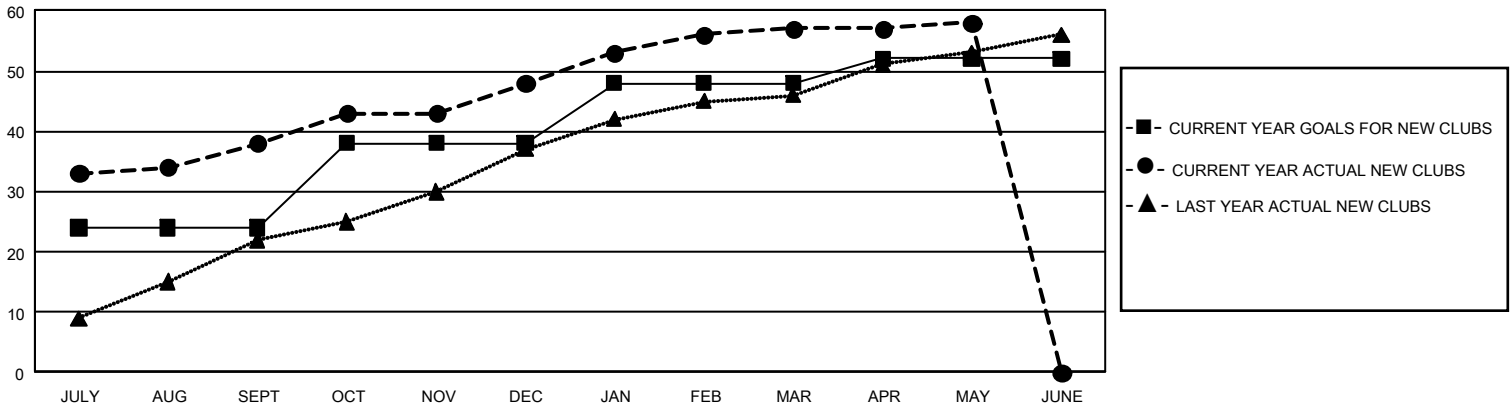
GMT: OPEN

REPORT DOES NOT INCLUDE CLUBS IN UNDISTRICTED AREAS.

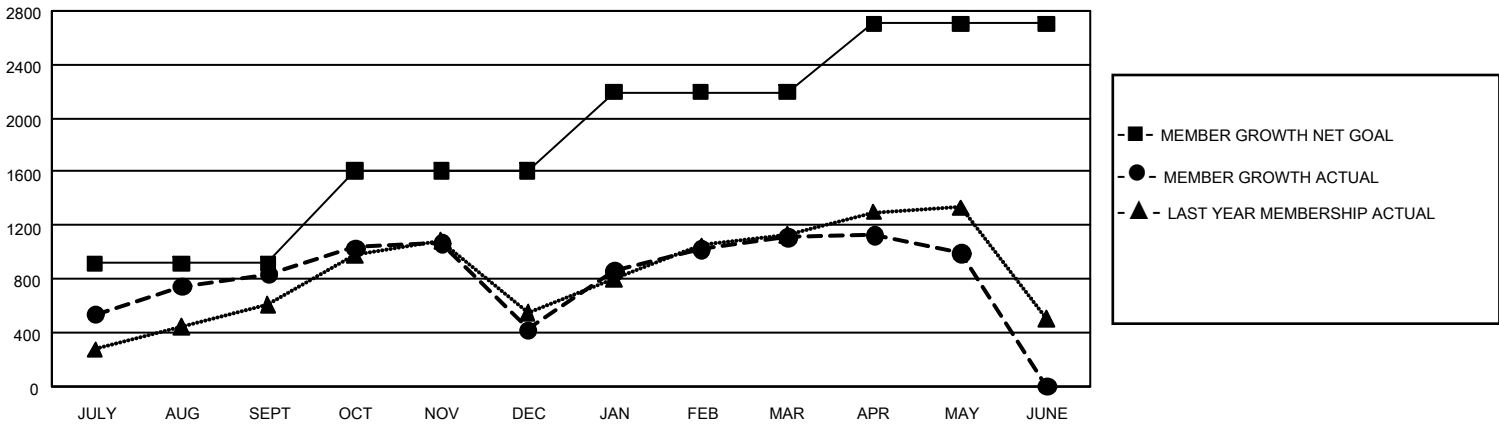
Clubs			
RESULTS FOR 2019-2020			
QUARTER	NEW CLUB GOAL	NEW CLUBS	DROPPED CLUBS
JULY/AUG/SEPT	72	38	4
OCT/NOV/DEC	42	10	18
JAN/FEB/MAR	30	9	1
APR/MAY/JUNE	12	1	0

Members			
RESULTS FOR 2019-2020			
QUARTER	MEMBER GROWTH NET GOAL	MEMBER GROWTH ACTUAL	DROPPED MEMBERS ACTUAL (including transfers)
JULY/AUG/SEPT	2,745	1,520	636
OCT/NOV/DEC	2,085	607	1,002
JAN/FEB/MAR	1,755	1,064	233
APR/MAY/JUNE	1,530	130	244

**GOALS AND ACTUAL NEW CLUBS CUMULATIVE**



**GOALS AND ACTUAL MEMBERS CUMULATIVE**



<b>DROPPED CLUBS: 23</b>	<b>363 CLUBS OF 598 ADDED 1 OR MORE NEW MEMBERS</b>	<b><u>GENDER DISTRIBUTION</u></b> MALE            14,439 (74.16%) FEMALE         5,031 (25.84%)
<b><u>DROPPED MEMBERS</u></b> DECEASED            61 CLUB CANCELLED     518 OTHER                 1,534 <hr/> TOTAL                 2,113	<a href="#">CLICK HERE FOR CUMULATIVE MEMBERSHIP DATA</a>	TOTAL FAMILY UNIT MEMBERS            6,415  FAMILY MEMBERS PAYING HALF DUES     3,398